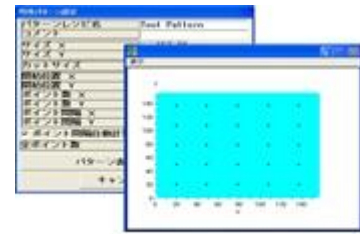
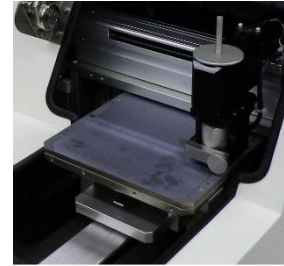


## Model : RG-200PV

Semi-automatic 4 point probe sheet resistance/resistivity measurement system



High speed measurement system for Square shape sample

Multi point measurement(Programmable & Random) & 2-D/3-D mapping

### Features

- Multi-points measurement and Mapping display
  - 2-D map / 3-D map graphic display
  - Multipoint pattern measurement is programmed and random pattern is programmable by operator.
- Measurement data base link with Excel via CSV format file
- Complies with the following ASTM & JIS
  - <JIS> JIS H 0602-1995, JIS K 7194-1994
  - <ASTM> ASTM F 84-99(SEMI MF84),  
ASTM F 374-00a, ASTM F 390-11,  
ASTM F 1529-97

### Applications

- Semiconductor materials, Solar-cell materials (Silicon, Polysilicon, SiC etc)
- New materials, functional materials (Carbon nanotube, DLC, graphene, Ag nanowire etc)
- Conductive thin film (Metal, ITO etc)
- Diffused sample (or layer)
- Silicon-related epitaxial materials, Ion-implantation sample
- Others (\*Please contact us for details)

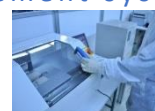
### Sample Sizes

<Square> Max 156 x 156mm

<Circle> Max 6inch

Thickness : Max 3mm

A global leading company for resistivity measurement system.



## Measurement Range

Test Item	Measurement Range
V/I Ratio	0.100m ~ 3.000M ohm
Sheet resistance	1.00m ~ 10.00M ohm/sq
Resistivity (Layer : 1.000 ~ 99.99μm)	1.00μ ~ 10.00k ohm.cm
Resistivity (Slice : 100.0 ~ 999.9μm)	0.100m ~ 100.0k ohm.cm

## Measurement Accuracy / Repeatability

Measurement Accuracy	Measurement Repeatability
<b>%BIAS &lt; ±1%</b>	<b>CV ≤ 0.7%</b>
$\%BIAS = \frac{\bar{X} - NIST\text{guaranteedvalue}}{NIST\text{guaranteedvalue}} \times 100[\%]$ <p><math>\bar{X}</math> ----- Average of same point x 10times measurement(23°C)</p>	$CV = \frac{\sigma}{\bar{X}} \times 100[\%]$ <p><math>\sigma</math> ----- Standard deviation of same point x 10times measurement(23°C) <math>\bar{X}</math> ----- Average of same point x 10times measurement(23°C)</p>

## Throughput (Tact time)

Points	Tact time
1	6 sec (±3sec)
5	12 sec (±3sec)
9	18 sec (±3sec)
25	42 sec (±3sec)
36	58 sec (±3sec)

\*Throughput will change by setting conditions, resistance value and the sample surface state.

## Dimension / Weight / Power supply

<Dimension, Weight> Mainbody : W400 × D600 × H325mm, 35kg

<Power supply> AC100V±10%, 50/60Hz, 100VA

\*Please contact us for more details.

\*The customers are always welcome to do Demo measurement.

\*Specification subject to change without notice.